

# Ainslie Majura Virtualgain

More MapRun Mayhem, 21 May to 14 June 2021

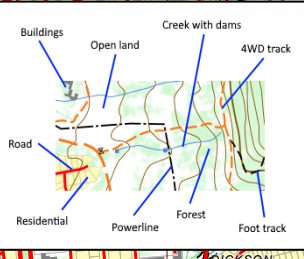


**Event Coordinator**  
Jiaying Goh

**Setters/Vetters**  
Jon Glanville  
Jean Douglass  
Ron Simpson

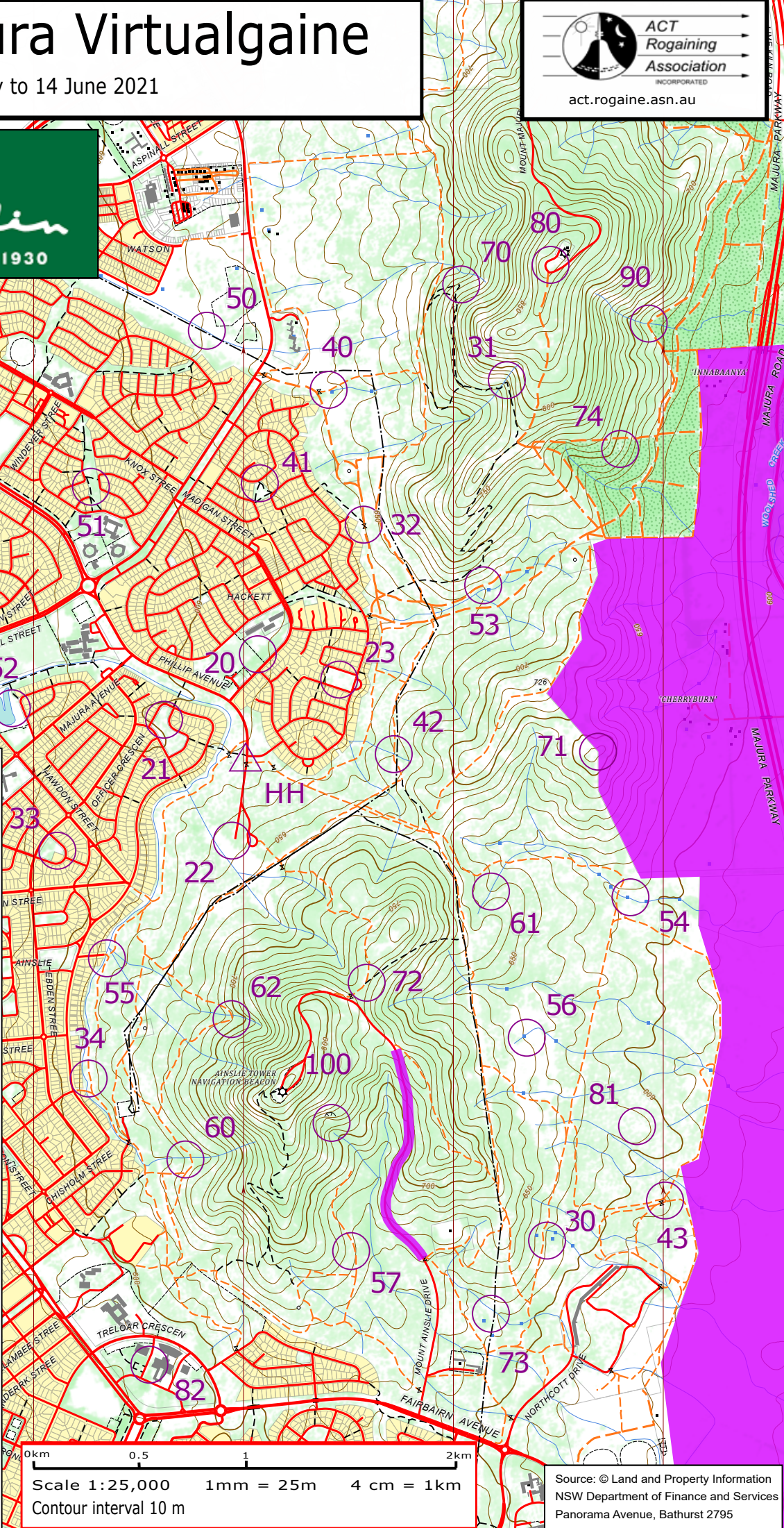
**MapRun**  
maprunners.weebly.com

**Paddy Pallin**  
www.paddypallin.com.au



**Control Descriptions**

- 20 A fence, end post
- 21 SE corner of a playground
- 22 A boulder, 1.2m high
- 23 A white tree trunk
- 30 A yellow Telstra post
- 31 A bridge
- 32 Horse logs next to the gate
- 33 A seat SE side of a playground
- 34 A power pole
- 40 The track at N end of dam wall
- 41 A 4-way path intersection
- 42 The watercourse/track junction (concrete)
- 43 A gate
- 50 The gully, a wall, north end
- 51 A light pole
- 52 A viewing area, rock in middle
- 53 The dam, signpost at NW corner
- 54 The dam wall, N end
- 55 A bridge, middle
- 56 The dam wall, S end, a metal post
- 57 A power pole, 30m from track
- 60 A mound, 20m west of an earth wall next to the track
- 61 A 1.5 m boulder cluster, 10 m E of the watercourse
- 62 The track/watercourse junction
- 70 The track bend, bare rock
- 71 A fence corner
- 72 The track, a post with no cycling, no camping signs
- 73 Tree stumps, 10 m N of a power pole
- 74 A small cairn in a clearing
- 80 A trig point
- 81 The spur, three concrete posts
- 82 A Centurion tank, south side
- 90 The track/creek junction
- 100 The quarry, south edge, eastern ring of stones



Source: © Land and Property Information  
NSW Department of Finance and Services  
Panorama Avenue, Bathurst 2795